



ROWEN



ROWEN

DESIGN GUIDELINES

2022

OVERVIEW

Rowen is conceived as a place for innovative endeavors and positive social interactions. Additionally, a key initiative of Rowen is that it itself serves as a living laboratory for study and innovation. Rowen is conceived to be multi-generational in its' creation and operation. As such these guidelines seek to be aspirational, foster multiple voices in creating a rich experiential place which supports the larger mission and vision of Rowen.

The goal of these guidelines is to establish a methodology for creativity and innovation which allows richer more encompassing solutions. The organization of these guidelines is constructed to establish minimum end goals for the physical environment at Rowen.

CONTENTS

SECTION 1 INTRODUCTION

- 1.1 Mission Statement
- 1.2 Vision

SECTION 2 UNIFYING PRINCIPLES

SECTION 3 ARCHITECTURAL GUIDANCE AND DESIGN REVIEW BOARD

- 3.1 Purpose
- 3.2 AGRB Structure
- 3.3 Purpose
- 3.4 Process

SECTION 4 MASTER PLAN REQUIREMENTS

- 4.1 Environmental Framework Plan
- 4.2 Comprehensive Transportation Network Plan
- 4.3 Public / Open Space Plan
- 4.4 Regulating Plan

SECTION 5 OVERALL DESIGN COMPONENTS

- 5.1 Sustainability
- 5.2 Public Spaces
- 5.3 Transportation Network, Complete Streets and Walkability
- 5.4 Distribution of Land Uses, Site Design
- 5.5 Architecture
- 5.6 Landscape Architecture
- 5.7 Signage and Environmental Graphics, Utilities and Lighting
- 5.8 Technology
- 5.9 Character Areas

SECTION 6 APPENDIX

Mission Statement

To be a catalyst for **EDUCATION, RESEARCH, INNOVATION, and TRANSFORMATION**

through the creation of a global destination which recognizes **STEWARDSHIP OF THE LAND** as the cornerstone of an inspired community.

We Are Known for The Place That We Create...

- **A place of natural beauty** where physical design, planning and programming inspire at the highest level of interaction, dialogue and collaboration among diverse peoples.
- **A place of stewardship** where the land, its collective history and all other assets are managed consistently and respectfully to build a more informed future.
- **A place that supports, fosters and leverages** the resources and talents of our Universities, Colleges, and Companies, advancing discovery and insight into action, policy and delivering products that enrich lives.
- **A place that fully recognizes and integrates** components promoting inspired and productive lives that ignite transformation in people, not only locally, but in the State of Georgia and beyond.
- **A place in a unique setting**, which we will be proud to say, includes research facilities, corporations, and residential living along with a town center that promotes education, healthy lifestyles, and gracious living.

Programmatic Drivers

Rowen will be developed with an active focus on three programmatic drivers which build on the strengths of Gwinnett County, the Region and the State of Georgia.

1. Environment
2. Agriculture
3. Medicine



Unifying Principles



These Design Guidelines establish a framework for all planning, design and placemaking associated with the development of Rowen. As the time frame for Rowen may span decades, this framework speaks to principles, components, place and scale - not style. Materiality is referenced in relation to scale and a sense of vernacular. The landscape provides environmental function, is rooted in place, and is the connective tissue within Rowen and the surrounding community.

As the ethos of Rowen is innovation, this framework is intended in part to be a challenge to all to incrementally plan, design and construct an environment that is demonstrative of the five following Unifying Principles.

Be respectful of the natural contour of the land and its' native plant communities.

Be collaborative to support programing for innovation as well as the arts, music and education.

Be authentic with a true narrative based upon the place.

Be inspirational where people experience something special.

Be accessible and inclusive to a wide variety of people, companies and institutions.

Architectural Guidance and

Review Board



Purpose

Rowen shall establish an Architectural Guidance and Review Board (AGRB); the purpose of the AGRB will be:

- To provide insight and guidance concerning the aspirations and standards set forth in these guidelines to anyone who wishes to construct facilities within Rowen.
- To provide timely review and comments of all required submittals.
- To provide necessary approvals of all submittals that are found to meet the goals and standards of these guidelines.

AGRB Structure

The AGRB shall work as adjunct staff to the Rowen Foundation and shall be comprised of 5 members. AGRB members will be appointed by the Rowen Foundation Board of Directors on an annual basis. Members shall bring diverse professional experience from industries such as landscape architecture, planning, design, real estate and sustainability.

The board shall consist of a chair, which shall be an existing member of the Rowen Foundation Board of Directors, the Rowen Foundation Chief Executive Officer and three (3) additional positions for a total of five (5) members.

1. Rowen Foundation Board Member (Chair)
2. Rowen Foundation Chief Executive Officer (Vice Chair)
3. Board Appointment 1
4. Board Appointment 2
5. Board Appointment 3

Process

All improvements within Rowen shall first receive approval from the AGRB stating that the proposed development is consistent with the mission, vision, principles, and standards contained in the Rowen Design Guidelines. While formal submittals are required to receive approval; the AGRB is conceived as a collaborative body supportive of innovative and “better than” solutions within Rowen.

The AGRB process requires a minimum of three (3) meetings as outlined below. Additional meetings may be requested by the applicant to seek guidance or address specific comments from the AGRB.

1. Initial Meeting

Initial meeting and discussion with the AGRB where the Board can provide any insights or thoughts as to how the proposed site or development relates to the larger goals and aspirations of Rowen and where the applicant can ask questions to enhance their understanding of the site, the guidelines and the process.

2. Preliminary Review

A Preliminary Review of schematic to early design development drawings where

the Board can see, and comment on the design direction proposed by the applicant including, but not limited to:

- Site Analysis identifying all environmental features such as topography, streams, wetlands, slopes, and vegetative cover that will influence the planning of the site.
- Site Plan illustrating how the proposed development is respectful of the natural contour of the land, other environmental features, connects to the larger transportation network and addresses any other goals and requirements of the guidelines.
- Storm Water Strategy Plan outlining the developments approach to integrating storm water into a functioning landscape.
- Preliminary Architectural Elevations to include dimensions, finish color along with proposed materials.
- Preliminary Landscape and Hardscape to include dimensions, finish color along with proposed materials.

- Preliminary Landscape Plan along with general plant masses and environmental restoration strategies.
- Concepts and locations of any site and building signage.
- Information on any anticipated green building or sustainability certifications.
- Any additional information that the applicant believes would help the AGRB fully understand the design intent.

3. Final Submittal

Final Submittal of drawings consistent with completed Design Development to Construction Documents that clearly illustrates:

- Site Plan illustrating all proposed improvements with calculation of site coverage and any anticipated impacts or road closures impacting surrounding sites and roads.
- Site Grading Plan.
- Site Storm Water management plan.

- Landscape Plan along with proposed species, quantities, and sizes.
- Architectural Elevation with indicated materials colors, materials and other information as necessary to communicate the design intent.
- Complete Sign Package.
- Construction Schedule.

For each meeting, the AGRB will issue written comments as minutes to the meetings. When approved, the AGRB will issue a formal letter of approval allowing the applicant to advance development.

Consistent with these principles, the following guidelines are established for Rowen. These guidelines will apply to the comprehensive planning of Rowen, as well as the design of individual elements and buildings therein both public and private.

Master Plan Requirements

The Master Plan will shape and define all areas with respect to the public realm and will consist at a minimum of an overall master plan, a regulating plan distributing land uses and intensities, a comprehensive multimodal transportation network plan, an environmental framework plan, and a public/open space system plan. The purpose of these documents is to ensure a thoughtful relationship between land use, all modes of transportation and usable and environmentally valuable lands and to

ensure publicly accessible open space is always maintained.

It is anticipated that the Master Plan will evolve and be modified over time. The regulating, transportation, and public/open space plans provided that such modifications will continue to establish and illustrate strong relationships between these key plan constructs.

I. Environmental Framework Plan

II. Comprehensive Transportation Network Plan

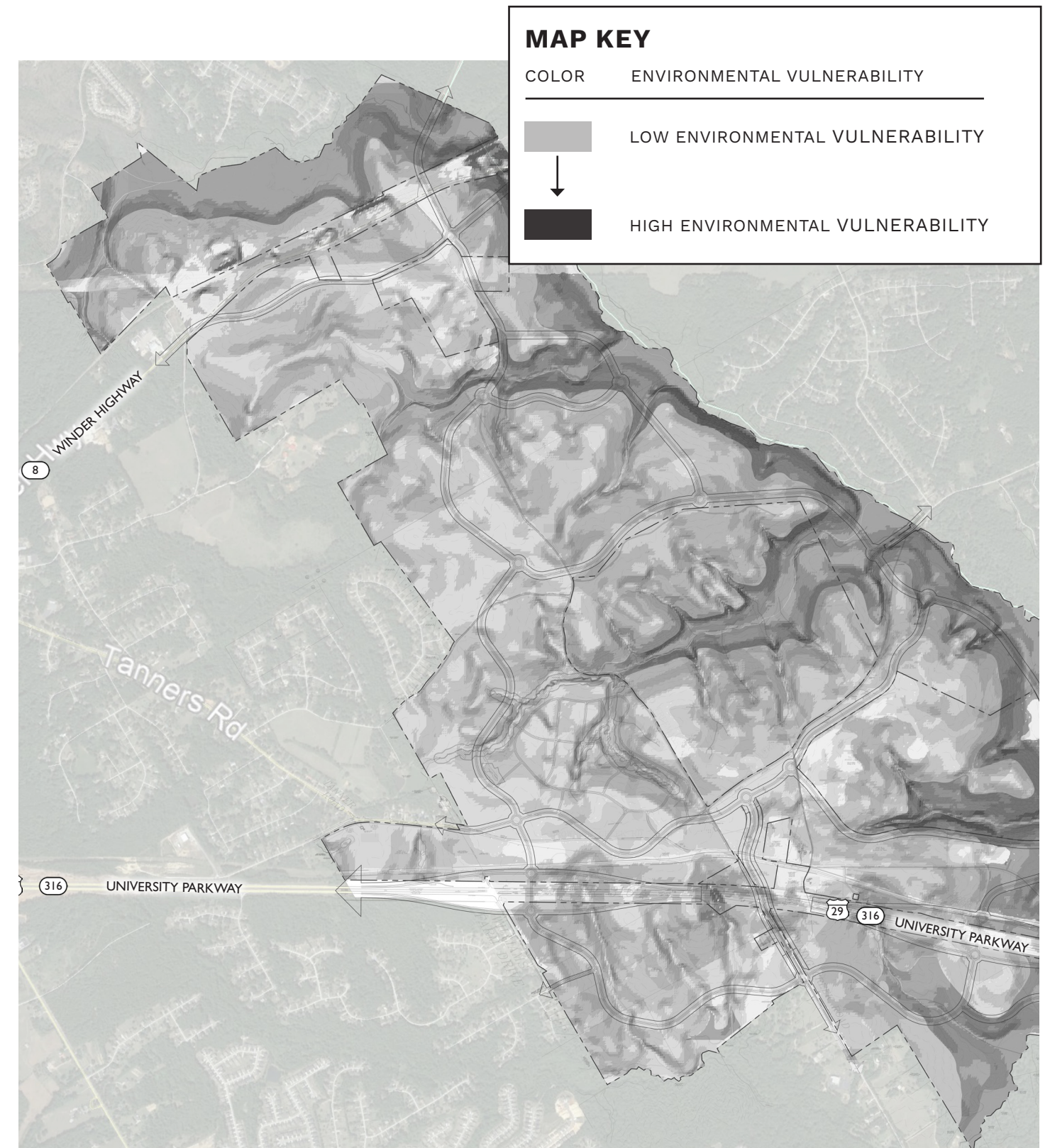
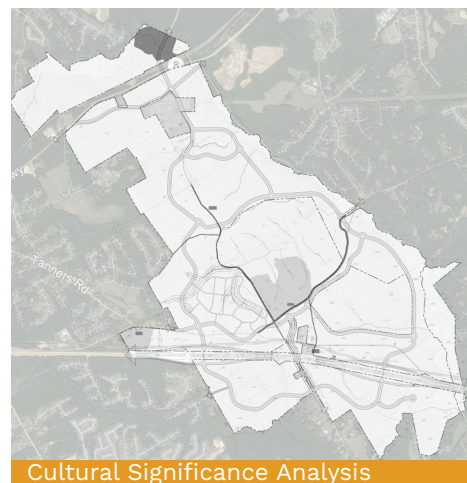
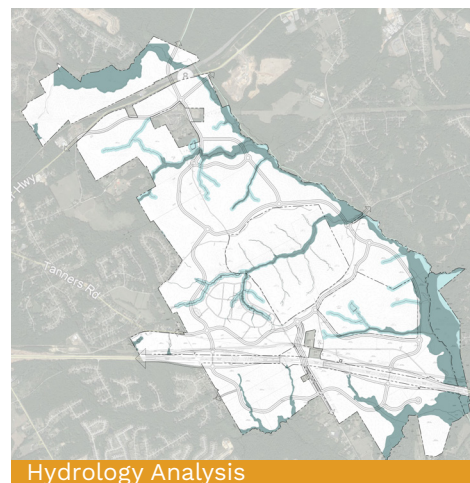
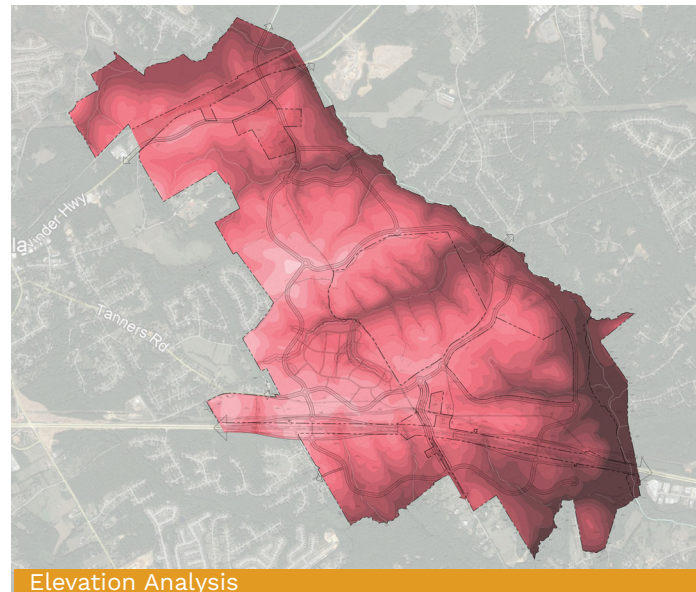
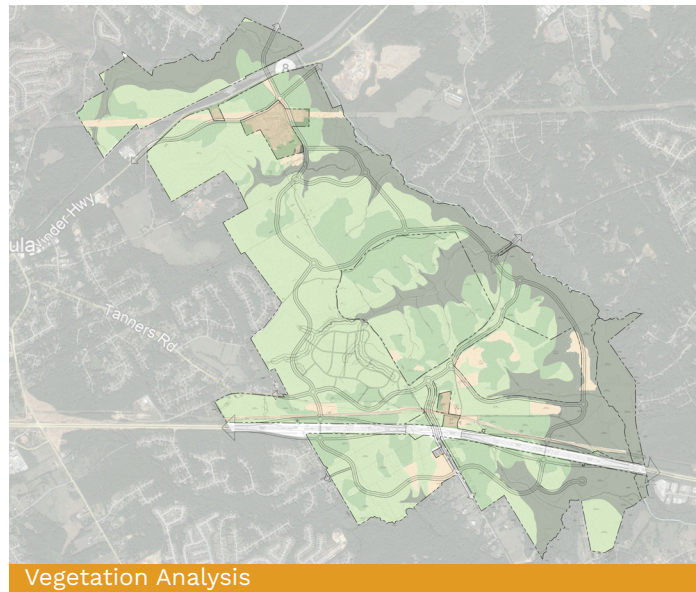
III. Public / Open Space Plan

IV. Regulating Plan



I. Environmental Framework Plan

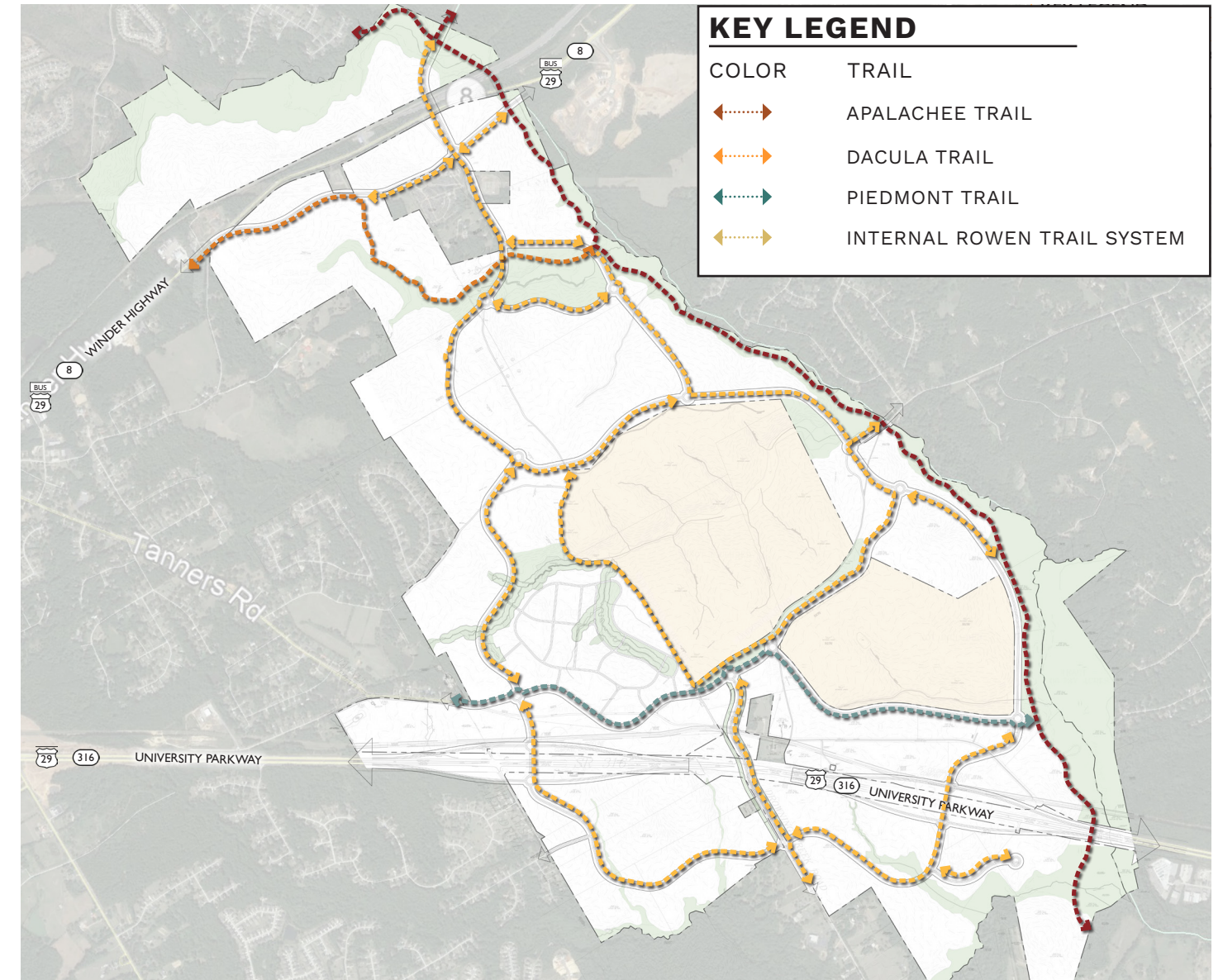
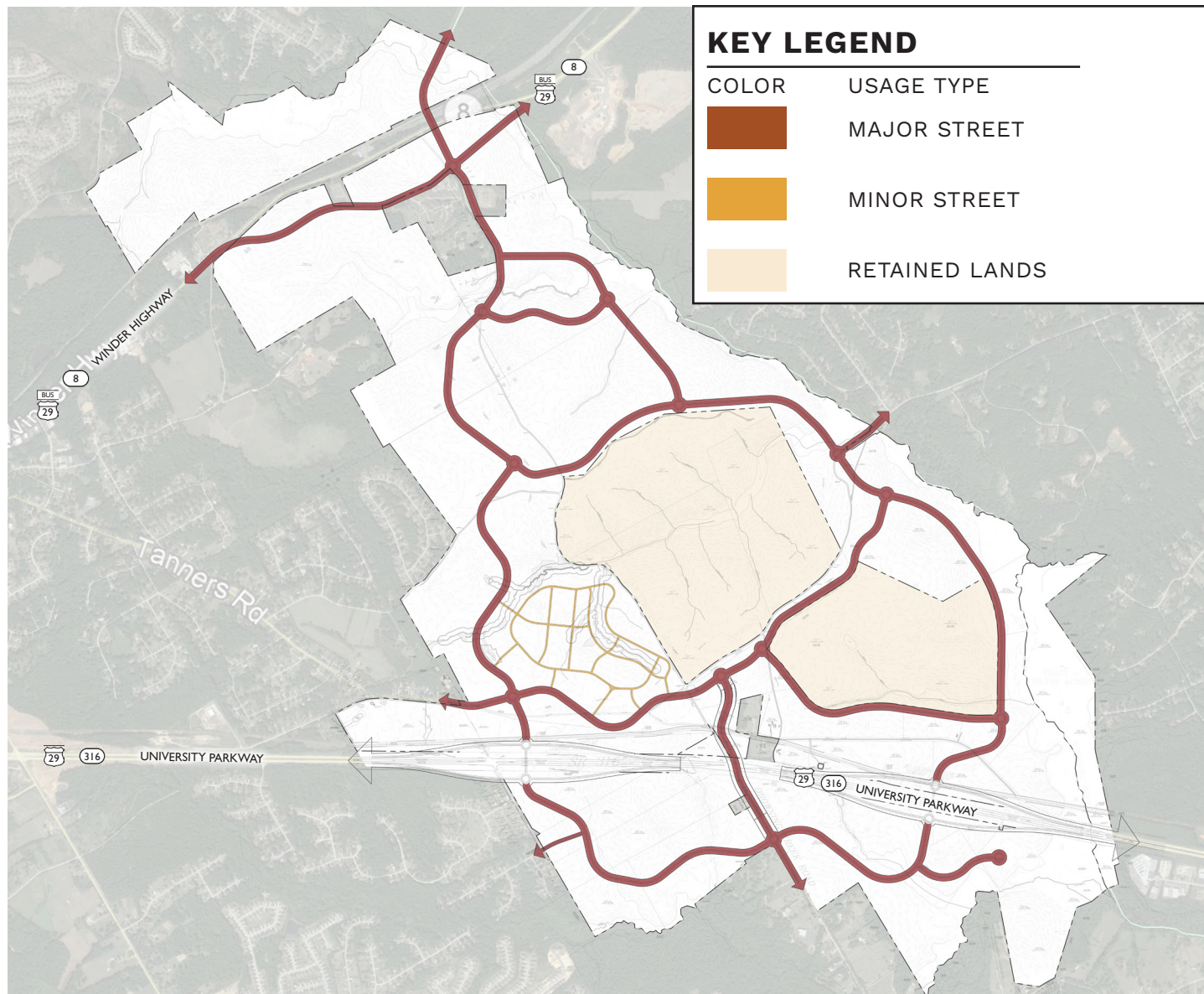
As a focus on environmental stewardship and health are key programmatic drivers of Rowen, all planning shall be undertaken with a sound basis and knowledge of existing environmental context. To guide the physical planning of the land, Rowen will develop and update as appropriate a Composite Overlay of site features such as to identify valuable environmental areas and systems. The composite will, at a minimum, identify and map types of vegetative cover, elevation change, steepness of slopes, site hydrology and valuable cultural resources. The resulting composite analysis should guide planning decisions in a manner that protects the most valuable and sensitive areas of the land.



II. Comprehensive Transportation

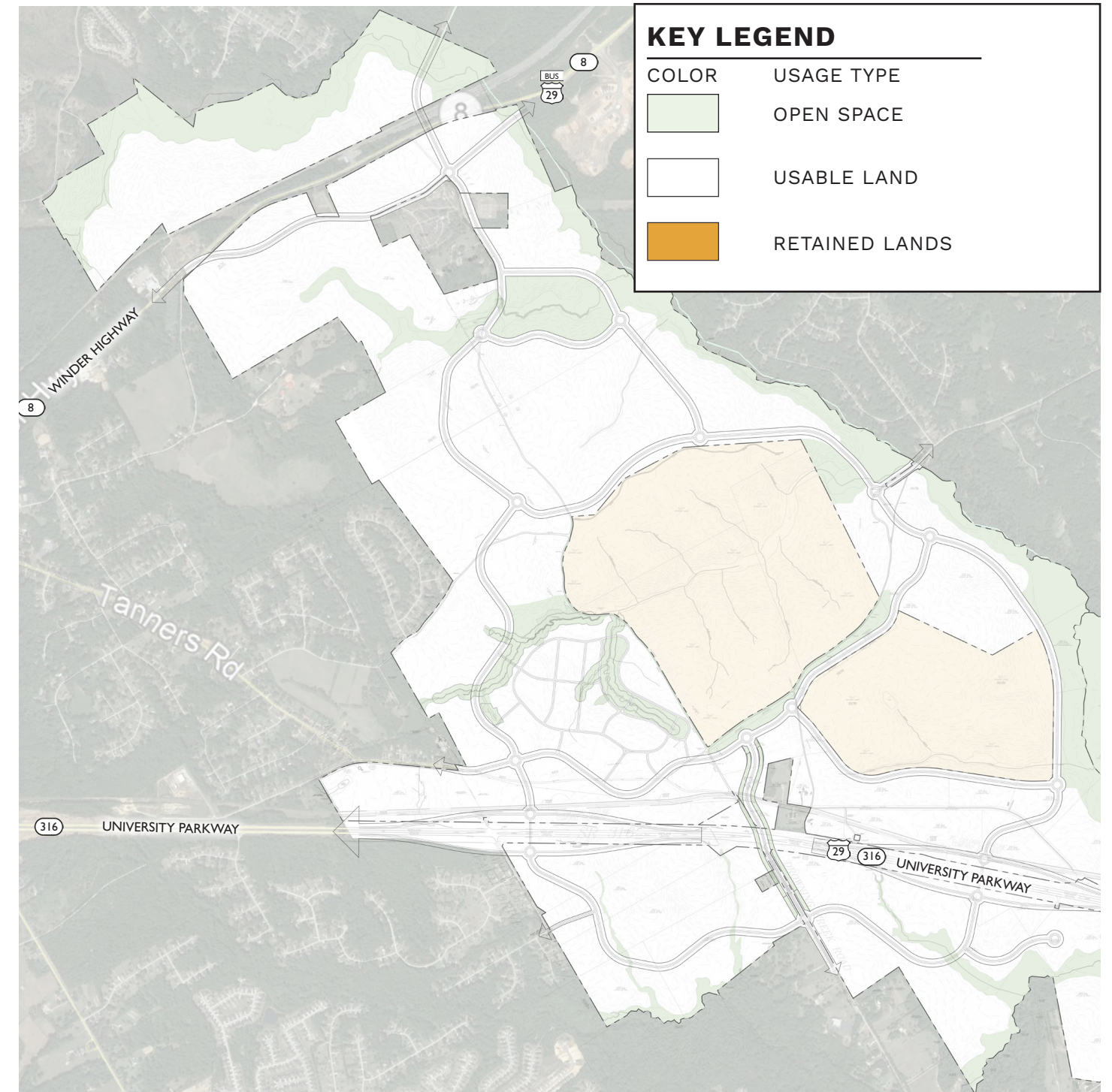
Network Plan

A clear hierarchy of multi-level transportation and connectivity is critical both within and to Rowen. Rowen will develop and update as appropriate a transportation plan that includes an integrated network of complete streets, transit options and a multi-modal trail system. The transportation plan itself should be thought of as a laboratory to test new methods of transportation and new technologies for transportation management.



III. Public / Open Space Plan

The Public/Open Space Plan should be guided by the Environmental Framework Plan and developed in conjunction with the Comprehensive Transportation Network Plan. The plan should provide a series of connected places which protect key areas of the property. Designated and designed spaces should preserve sensitive environmental areas and provide components that accommodate gathering active programming and demonstration agricultural gardens.

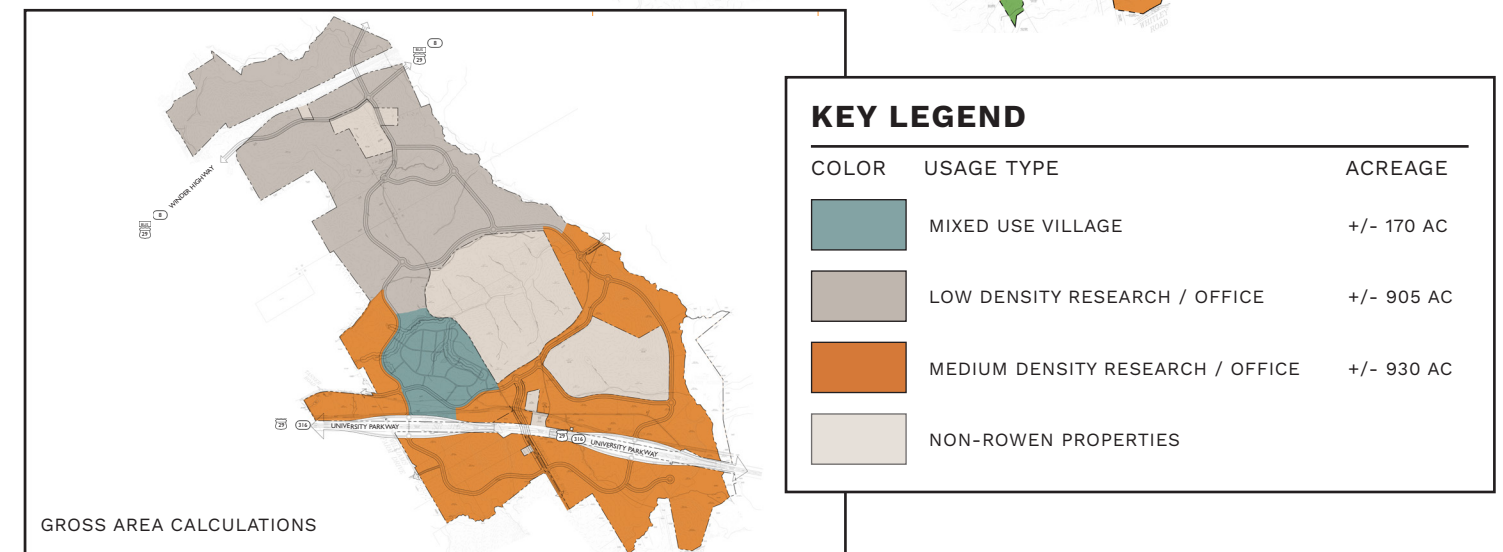
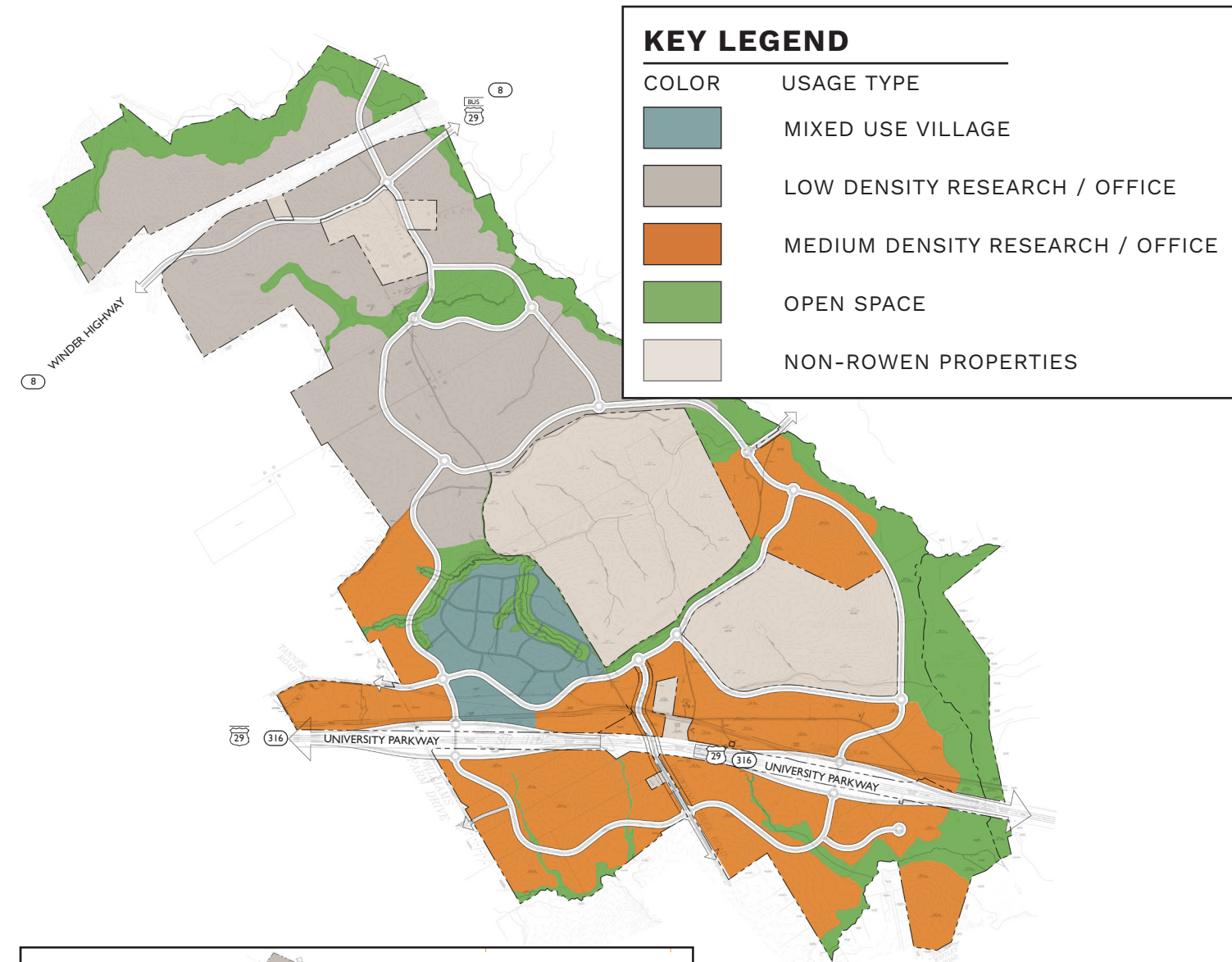


IV. Regulating Plan

Land uses within Rowen will fall into three character areas:

- Village
- Medium-density office/research, and
- Low-density office/research.

The Regulating Plan shall show the distribution and acreages of each character area with an allocation of the proposed square footage of development within designated land areas.



Overall Design Components

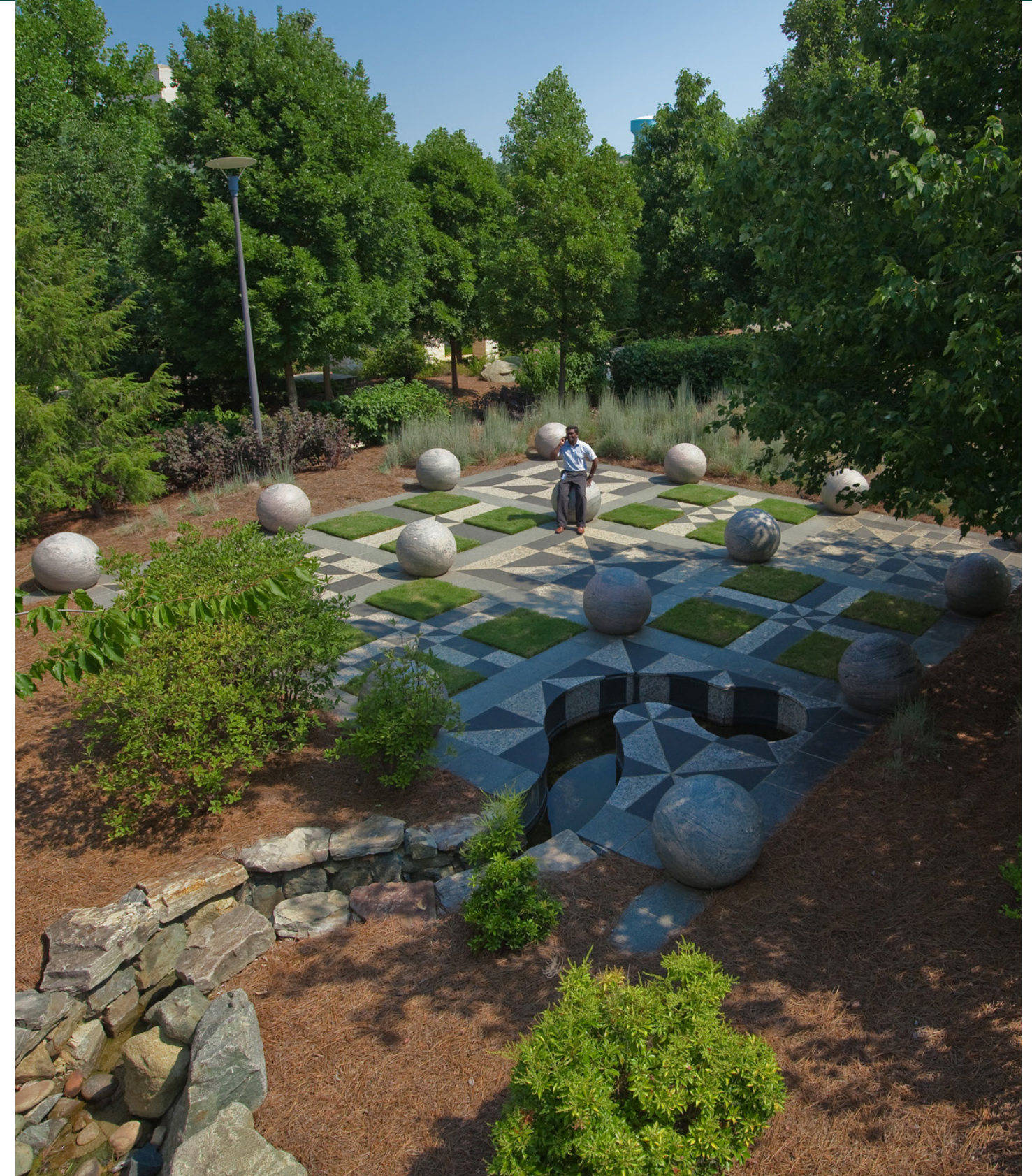
and Standards

The following outlines design components and standards which apply to any improvements within Rowen.

Sustainability

Within Rowen, sustainable thinking is a core value, an opportunity to learn and an opportunity to educate. Sustainability within Rowen shall address a hierarchy of elements including:

- Health and Wellbeing which focus on both a visual and physical connection to nature in support of positive mental and physical health. Access to nature, which promotes active design and movement as well as positive human interactions. In keeping with the agriculture programmatic driver, Rowen should include garden-level places that can demonstrate the production of food and speak to the importance of proper nutrition.
- Connectivity and Transportation are also key transportation components addressed to ensure an understanding of their dual role in reducing congestion as well as greenhouse gases.
- Sustainable Water Practices address water as a complete system. All sources of water including potable water, rainwater, and reuse water, work together to address needs while employing strategies that reduce resource impacts over time. The landscape will be considered as an integral component of reducing water use, cleaning storm water and enhancing groundwater recharge.
- Energy, where the use of clean energy sources and a net neutral energy goal drive design.
- Embodied Carbon, where choices of materials and preservation of tree cover can work to reduce emissions during any construction activity.
- Functioning Landscapes through preservation and restoration seek to mimic, support, and enhance habitat, biodiversity, carbon sequestration and water quality as found in nature.
- Climate Action and Resilience, where all aspects listed above come together to mitigate human-induced influences brought about by altering nature for human benefit.



Overall Design Components

and Standards

Public Spaces

- Public spaces within Rowen may be publicly owned spaces or spaces owned by the Rowen Foundation which are generally open to the public.
- Public spaces within Rowen will include a variety of park spaces, preserved green space, community gardens, pedestrian walkways and trail systems.
- Public spaces within Rowen shall be distributed in a manner such that no development site is more than 1,800 feet from a public space in low and medium density character areas and 1,200 feet in the village character area.
- The articulation of all public spaces shall be designed to provide safety, comfort and choices of activities. All public spaces will be kept clean and promote active use by a broad spectrum of people.
- Public spaces should be coordinated with Cultural Resources findings and should be designed to relay the history of the land.
- Public spaces should be connected via walkways and trails to create a network and be distributed within Rowen in a manner that all development sites front on or are within a five-minute walk of public space.
- Within the open space network, there should be a discernible hierarchy of places and the network should include a definitive main gathering space located in the primary village. Size and design should envision a variety of active programming and events and be capable of functioning as a central green.
- Design and construction of trails and spaces within environmentally sensitive areas of Rowen shall recognize the need to employ methods to preserve, protect and enhance the landscape.



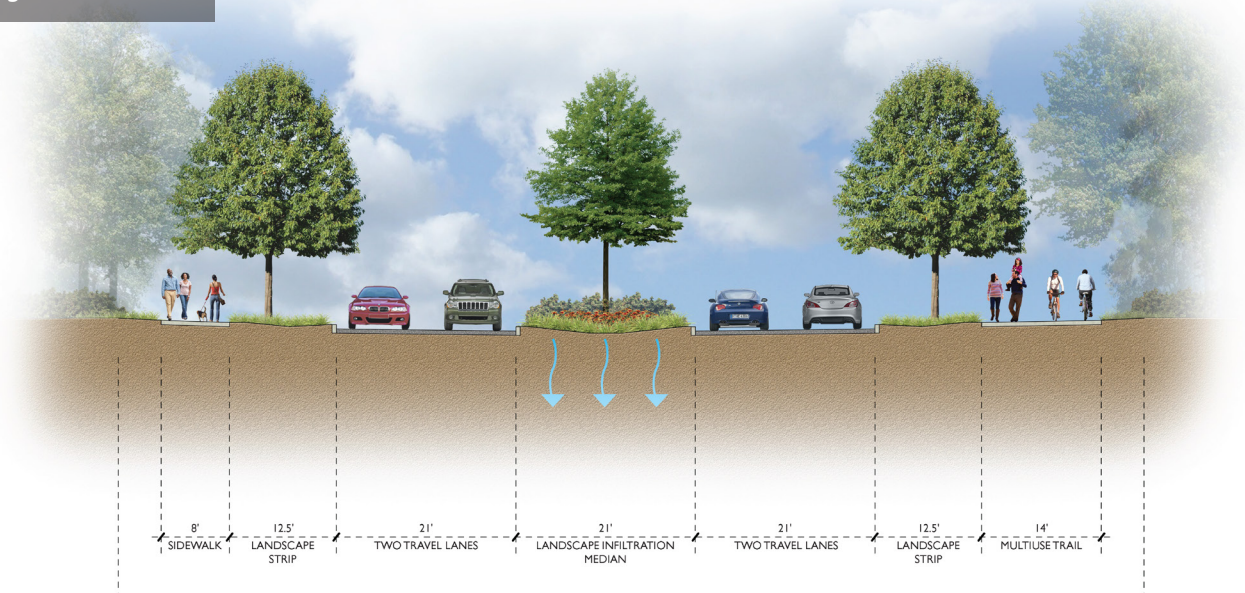
Overall Design Components

and Standards

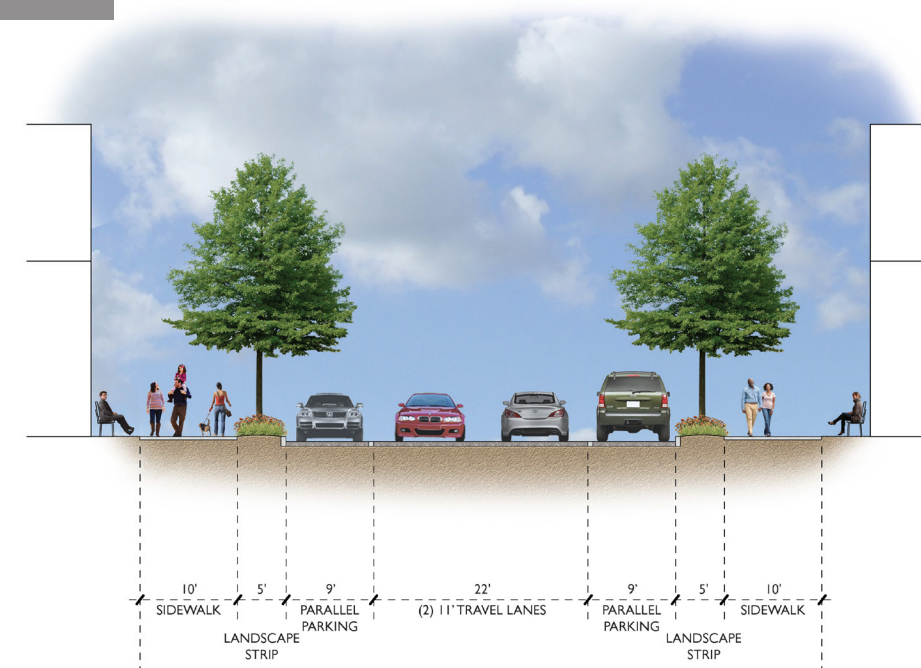
Transportation Network, Complete Streets and Walkability

- The transportation network should support connectivity within Rowen and to the surrounding district.
- The transportation network should value and seek to advance alternative forms of transportation.
- The transportation network considers walking a vital form of transportation.
- All streets will be complete streets, including facilities for bike, pedestrian and transit.
- The maximum design speed for streets shall be 30 MPH and shall be designed to promote traffic calming.
- Walkability will address: reasons to walk, pedestrian safety, pedestrian comfort, and pedestrian interest along all walkways.
- Typical street sections shall provide for multiple modes of transportation afford areas for landscape enhancements, including opportunities for areas of formal street tree plantings and environmental restoration.
- The transportation network should be considered as a laboratory for appropriately testing, measuring, and validating innovative concepts in all forms of transportation and last-mile connectivity.

Major Street



Minor Street



Overall Design Components

and Standards

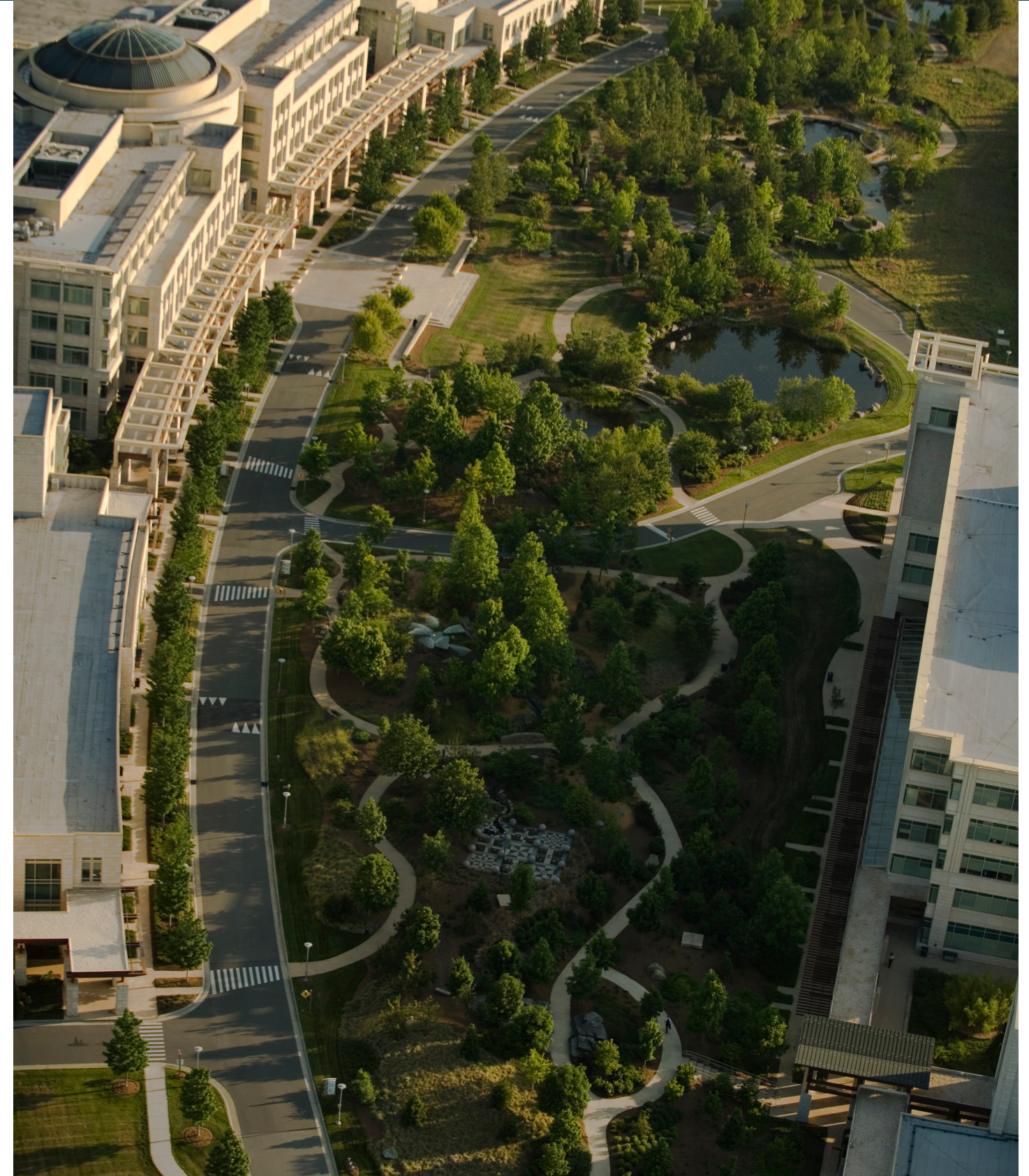
Distribution of Land Uses

- The Master Plan should seek to distribute land uses in a manner that supports accessibility to a wide range of companies and institutions.
- Uses should be distributed in a manner that affords all users services and access to open space.
- Residential uses will be remain in the Village Character Areas.

Site Design

All aspects of site design within Rowen shall be undertaken with specific respect to the unifying principle to **“Be respectful of the natural contour of the land and its’ native plant communities.”**

- Buildings should be sited to support essential views.
- Parking should be sited to be screened from view of any street or public space.
- Parking should be designed to reduce storm water runoff by 50% when measured against typical surface parking facilities and minimize heat island effects and dark sky intrusions.
- Structured and/or Underground Parking is encouraged.



Overall Design Components

and Standards

Architecture

Architecture within Rowen should not seek to be a style but rather a form of problem-solving rooted in place, environmentally conscious, and human in scale regardless of the building type. Strong design solutions that will withstand the test of time are preferred to support a cohesive idea of architecture and should produce:

- Buildings that abut or front on public space should be designed with a knowledge and relationship between their facades and the spaces they form.
- All buildings shall be designed in a manner to respect and respond to the human scale, which is appropriate to the site and building typology.
- Building height shall be limited to five (5) stories in low density and eight (8) stories in medium density and Village Character Areas to not dominate the forest and to promote the horizontal movement of people within Rowen. Height in stories is measured from the principal entry of a building. Stories below the principal entry-level, provided as a mechanism to follow the natural flow of the land, are not counted towards the height limit.
- Building forms should embody their location within Rowen with architectural responses that seek to connect the users with nature and place.
- Building materials shall be “of their place” and “of their time.” The “vernacular” materials at Rowen are found at the convergence point of nature, experience and innovation.
- Buildings should maximize the use of daylighting.



Overall Design Components

and Standards

Landscape Architecture

Landscape architectural elements within Rowen will support outdoor activities, human action with the environment, ecosystem preservation, and provide opportunities for agricultural and environmental education. The design of the landscape, public or private, shall be:

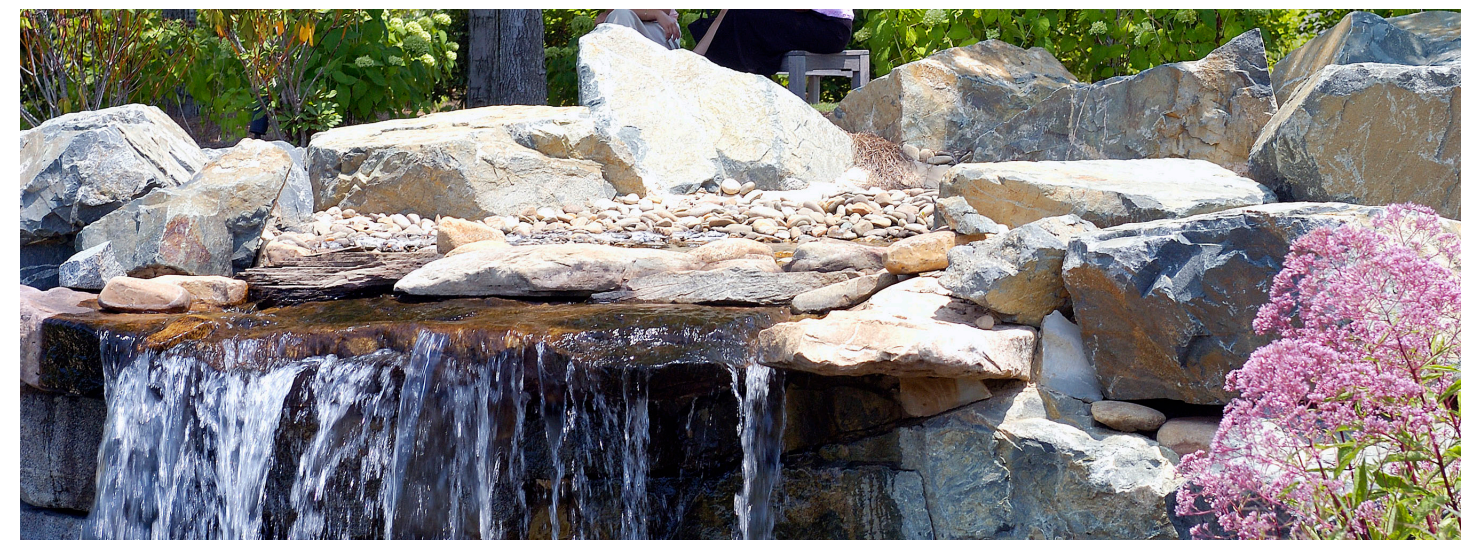
- An extension of the Environmental Framework Plan.
- Be coordinated with the Open Space and Transportation Plans



Plant material utilized within Rowen shall be native or well adapted to the central piedmont region of Georgia. Plant list can be found in the appendix. Other species may be presented to the AGRB for consideration.

Goals for the Rowen landscape:

- Reforestation and ecological enhancement to disturbed areas during construction and which are not otherwise used for building or direct human activity.
- Provide in conjunction with the open space plan a variety of places for human activities.
- Support agricultural and feed source education.
- Provide a consistent and common vocabulary based upon place.
- Provide education and be a living laboratory for understanding the intersection of the built and natural worlds.
- Provide comfort, interest and beauty throughout the year.



*For a complete Preferred Species List see Appendix.

Overall Design Components

and Standards

Art

Opportunities for interactive designs, outdoor sculptures, murals, indoor and outdoor performance venues and other forms of art should be integrated throughout Rowen.

Within each type of development Character Area described below as well as in the Public/Open Space Plan, the incorporation of the arts should be included throughout as a benefit for employees, residents, visitors and the general public. A particular focus should be given to artistic connections with Rowen's Programmatic Drivers and allowing for a diversity of experiences for all people.

Signage and Environmental Graphics

Within Rowen signage is intended to provide necessary information and wayfinding. Signage is not intended to dominate within the landscape or to provide any type of billboard effect.

Utilities and Lighting

All utilities and fiber communication runs shall be placed below grade in designated corridors.

All site-related lighting will comply with dark sky requirements and demonstrate energy efficiency.

All above ground and rooftop components for telecommunications shall be designed and placed as unobtrusive or screened from public view.



Overall Design Components

and Standards

Technology

It is anticipated that technology will play an enabling role across all aspects of Rowen to produce and sustain innovation over time. Technology and supportive infrastructure will align with the following overarching objectives:

- High-performance connectivity: providing a baseline of high-speed, open-access communications networks throughout Rowen, including wired and wireless networks in private, shared, and public spaces. This should include the ability to accommodate future increases in speed (e.g., 100Gbps fiber), as well as a neutral host approach that enables end-users to choose their preferred service provider(s).
- User experience focus: providing all community members with memorable, efficient services that support Rowen's overall identity as an innovation district. In particular, The Rowen Foundation expects developers to design based on user needs, including connecting people to programs, events, spaces, and each other through services such as resource booking, digital wayfinding, and other community-building features.
- Continuous innovation: enabling the testing, refinement, and adoption of new technologies and approaches through pilots and an open platform for innovation. This may include facilitating test opportunities with tenants, startups, and other innovative companies, developing a real-world lab environment, and sharing lessons learned with the broader Rowen community.
- Data transparency and integration: adhering to data privacy standards and open protocols to enable responsible, ongoing reporting and data consolidation across buildings, spaces, and developers. This includes identifying a beneficial purpose for any data collected.

Character Area Site Specific Standards

Users seeking to build on an individual site within Rowen shall plan and design their facilities to be in accordance with the overall Rowen standards outlined above. Additionally, individual sites within specific Character Areas shall meet the following standards associated with each area.

Low-Density Office/Research Character Area

The Low-Density Areas at Rowen are conceived as intensive research, which may demand more seclusion and separation. The area may include both office and research encompassing both single-use buildings and campuses.

- Site coverage is limited to 60% of the total land area contained in the site being developed.
- Site design should provide a direct pedestrian connection with adjoining streets, trail systems and pathways associated with the Comprehensive Transportation Network Plan.



Overall Design Components

and Standards

Medium-Density Office/Research Character Area

The Medium-Density Areas at Rowen are conceived as clusters of research and office buildings organized around areas of defined common open space.

- Site coverage is limited to 75% of the total land area contained in the site being developed.
- All buildings should have a direct relationship to, and front on the adjacent common open space.
- Site design shall provide a direct pedestrian connection to adjoining streets, trail systems and walks contained in the adjoining common open space.



Village Character Area

The Village Character Areas at Rowen are conceived as places of commerce, living, social interaction and areas of civic use, centers with public spaces, public-facing active uses and multifamily residential development. Within the Villages, diverse uses and users contribute to and are necessary for the vibrant community envisioned.

Developments in the Village shall be implemented as outlined in the district masterplan and with the following characteristics:

- All buildings within the Village shall have a direct relationship to the streets they front. The relationship shall require direct access from the building to the street and require active uses along the street.
- Village buildings shall have an active, dynamic relationship to the public sidewalk utilizing both street fronting facades and active outdoor spaces. Setbacks and yards shall vary by use but shall contribute to activity. Lawns and yards are permitted only as programmed spaces and shall be extensions of the public realm.
- All buildings within the Village shall be developed to support a human-scaled environment, including interesting and appropriately scaled facade elements including windows, doors, story height and setbacks. Building heights shall vary and shall be proportionately tied to the setbacks fronting the street.
- All buildings within the Village shall be sited with setbacks and orientation to address the street and to shape shared space between buildings. Developments are encouraged to collaborate with adjacent properties and to share public and support areas where feasible.
- Village buildings are encouraged to be designed with modulating facade planes and varying heights to contribute to the vitality of the streetscape.

Overall Design Components

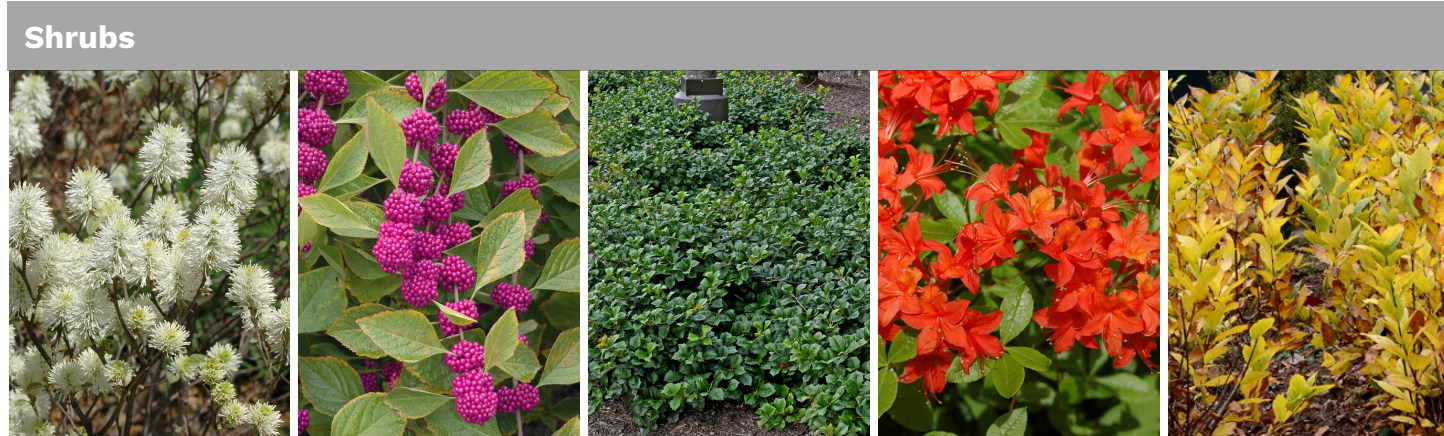
- Village buildings shall be developed as unique and individual components within a larger context. Individuality is an essential expression of an innovative spirit.
- Village building design shall avoid excessive uniformity in the district.
- Village materials, both interior and exterior, represent a fundamental statement of an approach to sustainability and energy efficiency, to regional context, to durability and maintenance, to functionality and personality, to the merger of nature and technology.
- Design inspiration shall incorporate language appropriate for the specific location in the Village. Various locations call for various impressions (iconic, quiet, recessive, edge, filler, transparent, etc.) and building designs shall do their part to enhance the built community.
- Village building design features shall respond to the importance of views to the building from the streets or from key vistas.

and Standards

- All on-site parking shall be to the rear of the building and be screened from public view. District parking solutions are encouraged where possible.
- All service areas, including utility infrastructure, shall be to the rear of the building and screened from public view. Shared service areas are encouraged where possible.
- All streets within the Village Areas shall be planted with street trees. Trees shall be planted between the curb and designated pedestrian zone at a spacing no greater than 40 feet on center.
- Open space will be distributed in a manner such that no lot is more than 1,200LF from a park, plaza, or other defined open space.
- The Primary Village shall contain a main gathering space. The space shall be designed to accommodate multiple types of programmed activities.



Appendix



Rowen Preferred Species List: TREES													
Botanical Name	Common Name	Hydic	Mesic	Sub Xeric	Lower Height Range	Upper Height Range	Lower Score Range	Upper Score Range	High Litter	Edible	Only in naturalizing areas	Recommended cultivars	
Acer barbatum	Southern Sugar Maple	•	•		35	70	25	50					
Acer leucoderme	Chalkbark Maple		•	•	30	50	25	30					
Acer rubrum	Red Maple	•	•		35	70	20	40				October Glory, Sun Valley	
Aesculus pavia	Red Buckeye	•	•		15	25	10	20					
Aesculus sylvatica	Painted Buckeye	•	•		10	20	8	15					
Alnus serrulata	Hazel Alder	•	•		15	25	8	15					
Amelanchier arborea	Downy Serviceberry		•		15	25	10	20		♦		Autumn Brilliance	
Asimina triloba	Pawpaw	•	•		20	30	12	20		♦			
Betula nigra	River Birch	•	•		35	70	25	50				Dura-heat, Heritage, Fox Valley	
Carpinus caroliniana	American Hornbeam	•	•		30	50	30	45				Native Flame, Collynair, Clarynette	
Carya aquatica	Water Hickory	•	•		50	75	40	60	•				
Carya carolinae-septentrionalis	Southern Shagbark Hickory		•		70	125	30	50	•				
Carya cordiformis	Bitternut Hickory	•	•		60	100	30	50	•				
Carya glabra	Pignut Hickory		•	•	60	100	35	60	•				
Carya ovalis	Red Hickory		•		60	125	25	50	•	♦			
Carya ovata	Shagbark Hickory		•	•	70	125	40	60	•	♦			
Carya pallida	Sand Hickory		•	•	30	50	20	30	•				
Carya tomentosa	Mockernut Hickory		•	•	50	100	35	45	•	♦			
Castanea pumila	Chinkapin		•		12	25	12	20		♦			
Cercis canadensis	Eastern Redbud		•	•	20	35	20	30				Several cultivars available	
Chionanthus virginicus	American Fringetree		•	•	15	25	10	20				Prodigy, Emerald Knight, Serenity	
Cornus alternifolia	Pagoda Dogwood		•		20	30	15	30					
Cornus florida	Flowering Dogwood		•		25	40	20	35				Cherokee Princess, Appalachian Mist	
Crataegus crusgalli	Cockspur Hawthorn		•	•	20	30	20	30					
Crataegus iracunda	Red Hawthorn		•		12	20	10	15					
Crataegus marshallii	Parsley Hawthorn	•			12	25	10	20					
Crataegus spathulata	Littlehip Hawthorn		•	•	15	25	10	20					
Crataegus viridis	Green Hawthorn	•	•		20	30	15	25				Winter King	
Diospyros virginiana	American Persimmon		•	•	35	70	20	35		♦			
Fagus grandifolia	American Beech		•		50	100	40	80					
Halesia diptera	Two-wing Silverbell	•			20	35	15	30				Magniflora	
Halesia tetraptera	Common Silverbell	•			30	50	20	40			•		
Hamamelis virginiana	American Witchhazel		•		12	25	12	25				Harvest Moon	
Ilex opaca	American Holly		•	•	30	60	15	30				Several cultivars available	
Juglans nigra	Black Walnut	•	•		50	100	30	60	•	♦			
Juniperus virginiana	Eastern Red Cedar		•	•	30	60	15	20				Brodie, Canaertii, Peerless, Taylor	
Liquidambar styraciflua	Sweetgum	•	•		60	90	35	60	•		•		
Liriodendron tulipifera	Tulip Tree	•	•		70	150	30	70				Emerald City	
Magnolia acuminata	Cucumber Magnolia		•		60	100	30	80					
Magnolia grandiflora	Southern Magnolia		•	•	30	90	25	60	•			Brackens Brown Beauty, Claudia Wannemaker, Teddy Bear, Little Gem, Hasse	
Magnolia macrophylla	Bigleaf Magnolia		•		35	70	20	40	•				
Magnolia pyramidata	Pyramid Magnolia		•		15	25	10	15					
Magnolia tripetala	Umbrella Magnolia		•		25	45	20	30					
Magnolia virginiana	Sweet Bay Magnolia	•			35	60	20	30				Green Shadow, Moonglow, Green Mile, Keltyc	
Malus angustifolia	Southern Crabapple		•	•	20	25	20	25		♦			
Morus rubra	Red Mulberry	•	•		30	60	25	50		♦			
Nyssa sylvatica	Black Gum	•	•	•	40	80	20	40				Green Gable, Wildfire, White Chapel	
Nyssa sylvatica v. biflora	Swamp Black Gum	•			35	70	20	30					
Ostrya virginiana	Hop Hornbeam		•		30	50	20	40					
Oxydendrum arboreum	Sourwood		•	•	30	60	15	25			•		
Pinus echinata	Shortleaf Pine		•	•	60	125	25	35					
Pinus glabra	Spruce Pine		•		50	100	20	35					
Pinus palustris	Longleaf Pine		•	•	50	100	20	35					
Pinus taeda	Loblolly Pine	•			70	150	25	45					
Pinus virginiana	Virginia Pine		•	•	35	70	15	25					
Platanus occidentalis	Sycamore	•			70	150	30	70	•		•		
Prunus americana	American Plum		•		10	20	10	20		♦			
Prunus serotina	Black Cherry		•		40	80	20	40			•		
Prunus umbellata	Flatwoods Plum		•	•	10	15	10	15				Sophia Spring	
Ptelea trifoliata	Hoptree		•	•	15	25	10	20					
Quercus alba	White Oak		•	•	70	150	60	100					
Quercus coccinea	Scarlet Oak		•	•	70	150	60	80					
Quercus falcata	Southern Red Oak		•	•	60	100	40	70					
Quercus georgiana	Georgia Oak		•	•	15	25	15	25					
Quercus lyrata	Overcup Oak	•	•		60	100	40	80				Highbeam, Marquee, Highlights	
Quercus michauxii	Swamp Chestnut Oak	•	•		70	125	50	100					
Quercus montana	Chestnut Oak		•	•	60	100	35	45					
Quercus muehlenbergii	Chinkapin Oak		•		50	90	30	50					
Quercus nuttallii	Nuttall Oak	•	•		60	100	40	70				Breezeway, Highpoint	
Quercus pagoda	Cherrybark Oak	•	•		70	125	40	60					
Quercus phellos	Willow Oak	•	•		60	125	40	60				Hightower, Kingpin, Ascendor, Upperton	

Appendix

Rowen Preferred Species List: TREES													
Botanical Name	Common Name	Hydric	Mesic	Sub Xeric	Lower Height Range	Upper Height Range	Lower Score Range	Upper Score Range	High Litter	Edible	Only in naturalizing areas	Recommended cultivars	
Quercus rubra	Northern Red Oak		•			80	150	40	70				
Quercus shumardii	Shumard Oak	•	•			80	150	40	60				
Quercus stellata	Post Oak		•	•		50	100	30	50				
Rhamnus caroliniana	Carolina Buckthorn		•			20	30	10	15				
Salix nigra	Black Willow	•				35	60	15	30		•		
Sassafras albidum	Sassafras		•			30	60	15	35				
Styrax americanus	American Snowbell	•				8	12	10	14		•		
Styrax grandifolius	Bigleaf Snowbell		•			10	20	10	20		•		
Taxodium ascendens	Pond Cypress	•				50	80	20	30			Fox Red	
Taxodium distichum	Bald Cypress	•				70	125	30	60			Autumn Gold, Green Whisper, Shawnee Brave	
Tilia americana	American Linden		•			60	120	25	40			Durable, Redmond	
Tilia americana v. heterophylla	White Basswood	•	•			50	100	20	35				
Ulmus alata	Winged Elm		•	•		40	70	30	50			Woodland, Kalysta	
Ulmus americana	American Elm	•	•			60	100	40	80			Princeton, Valley Forge, Jefferson	
Ulmus rubra	Slippery Elm	•				40	80	25	35		•		
Vaccinium arboreum	Sparkleberry		•	•		12	20	6	12				
Viburnum rufidulum	Rusty Blackhaw Viburnum		•	•		10	20	6	12				
Viburnum prunifolium	Blackhaw Viburnum		•			10	20	7	12				

Rowen Preferred Species List: SHRUBS													
Botanical Name	Common Name	Hydric	Mesic	Sub Xeric	Lower Height Range	Upper Height Range	Lower Score Range	Upper Score Range	High Litter	Edible	Only in naturalizing areas	Recommended cultivars	
Leucothoe axillaris	Coastal Leucothoe		•			2	4	3	5				Jenkins
Leucothoe fontanesiana	Drooping Leucothoe	•	•			3	5	4	7				Whitewater
Lindera benzoin	Spicebush	•				5	10	6	12				
Lyonia lucida	Fetterbush	•				4	8	6	12				
Myrica cerifera	Waxmyrtle	•	•	•		10	20	10	20				Don's Dwarf
Myrica heterophylla	Swamp Bayberry	•				5	8	6	10				
Philadelphus inodorus	Scentless Mock-orange		•			8	15	8	15				
Physocarpus opulifolius	Ninebark	•				5	10	6	10				Several cultivars available
Prunus angustifolia	Chickasaw Plum		•	•		10	18	8	15		◆		
Rhapidophyllum hystrix	Needle Palm		•			8	12	8	15				
Rhododendron arborescens	Sweet Azalea	•	•			6	12	6	12				
Rhododendron alabamense	Alabama Azalea		•			5	8	4	8				
Rhododendron calendulaceum	Flame Azalea		•			6	10	8	12				
Rhododendron canescens	Piedmont Azalea		•			8	14	6	10				Phlox Pink
Rhododendron flammulum	Oconee Azalea		•			6	10	6	8				Orange Carpet
Rhododendron x 'Maximum Roseum'	Maximum Roseum		•			10	20	10	20				
Rhododendron periclymenoides	Pixterbloom Azalea		•			4	8	4	8				
Rhododendron prinophyllum	Roseshell Azalea		•			6	12	6	12				
Rhododendron prunifolium	Plumleaf Azalea		•			6	15	6	10				
Rhododendron viscosum	Swamp Azalea	•				4	8	3	6				
Rhus aromatica	Fragrant Sumac		•	•		4	8	5	10				Gro-low
Rhus copallina	Shining Sumac		•	•		8	15	6	12				Prairie Flame, Creels Quintet
Rhus glabra	Smooth Sumac		•	•		10	20	6	12				
Rosa foliosa	Leafy Rose		•	•		3	5	4	8				
Rosa carolina	Carolina Rose		•	•		3	5	4	8				
Rosa palustris	Swamp Rose	•	•			4	6	6	8				
Sambucus canadensis	Elderberry	•				6	12	5	10		◆	•	
Salix eriocephala	Missouri Willow	•				10	18	15	25			•	
Staphylea trifolia	Bladdernut	•				8	15	8	15				
Vaccinium corymbosum	Highbush Blueberry	•	•			5	10	4	8		◆		Several cultivars available (Sunshine Blue)
Vaccinium elliotii	Elliott's Blueberry	•	•			3.5	7	3	6		◆		
Vaccinium pallidum	Late Lowbush Blueberry	•	•	•		1.5	2	1.5	8		◆		
Vaccinium stamineum	Deerberry	•	•			4	10	4	10				
Vaccinium tenellum	Southern Blueberry	•	•			2	4	2	4		◆		
Vaccinium virgatum (V. ashei)	Rabbiteye Blueberry	•	•			4	8	3	6		◆		Several cultivars available
Viburnum acerifolium	Mapleleaf Viburnum		•			3	6	3	6				
Viburnum dentatum	Arrowwood Viburnum		•			8	12	8	15				Several cultivars available (Blue Muffin, Emerald Lustre)
Viburnum nudum	Swampshaw Viburnum	•				5	10	4	8				Winterthur, Brandywine
Viburnum obovatum	Walter's Viburnum	•	•			3	5	3	6				Ms. Schiller's Delight, Best Densa
Viburnum rafinesquianum	Downy Viburnum		•	•		5	10	5	10				
Viburnum recognitum	Smooth Arrowwood	•				8	15	6	12				

Rowen Preferred Species List: SHRUBS													
Botanical Name	Common Name	Hydric	Mesic	Sub Xeric	Lower Height Range	Upper Height Range	Lower Score Range	Upper Score Range	High Litter	Edible	Only in naturalizing areas	Recommended cultivars	
Aesculus parviflora	Bottlebrush Buckeye	•	•			8	15	10	20				
Agarista populifolia	Florida Leucothoe	•	•			8	15	7	14			Leprechaun	
Amorpha fruticosa	Indigo-bush	•				8	15	8	15		•		
Aralia spinosa	Devils-walkingstick		•	•		10	25	10	20		•		
Asimina parviflora	Dwarf Pawpaw		•			4	8	3	6		◆		
Aronia arbutifolia	Red Chokeberry	•	•			6	10	5	10			Brilliantissima	
Callicarpa americana	American Beautyberry		•			4	7	6	10				
Calycanthus floridus	Carolina Sweetshrub		•			4	8	4	8			Micheal Lindsey	
Ceanothus americanus	New Jersey Tea		•	•		2	4	2.5	4				
Cephalanthus occidentalis	Buttonbush	•				6	12	5	8			Sugar Shack	
Clethra alnifolia	Summersweet		•			4	8	4	7			Hummingbird, Ruby Spice	
Cornus amomum	Silky Dogwood	•				6	12	8	15		•	Cayenne	
Cornus strictus	Swamp Dogwood	•				6	12	8	14		•		
Corylus americana	American Hazelnut		•			7	14	7	15		◆		
Corylus cornuta	Beaked Hazelnut	•	•	•		3	7	3	20		◆		
Cyrilla racemiflora	Cyrilla	•	•			10	25	15	30			Mississippi Queen	
Euonymus americanus	Strawberry-bush		•			5	8	3	6				
Fothergilla major (hybrid)	Large Fothergilla		•			6	10	6	10			Mt. Airy	
Hydrangea arborescens	Mountain Hydrangea	•	•			2.5	5	3	6			Bounty, Annabelle, Invincibelle Spirit	
Hydrangea quercifolia	Oakleaf Hydrangea		•			5	8	6	12			Several cultivars available	
Hypericum densiflorum	Bushy St. Johnswort	•	•			3.5	5	4	6			Creel's Gold Star	
Hypericum frondosum	Shrubby St. Johnswort	•	•			2	3	2.5	4			Sunburst	
Hypericum nudiflorum	Naked-flowered St. John's Wort	•	•			2.5	4	2.5	3.5				
Hypericum prolificum	Shrubby St. Johnswort		•	•		2.5	5	2.5	5				
Hypericum stragulum	Spreading St. Andrew's Cross		•	•		0.5	1	1	2				
Ilex decidua	Deciduous Holly	•				12	25	8	15			Warren's Red	
Ilex glabra	Inkberry		•			5	10	5	10			Densa, Nigra	
Ilex opaca	American Holly		•	•		3	6	4	8			Maryland Dwarf	
Ilex verticillata	Winterberry	•	•			6	10	6	10			Red Sprite, Jim Dandy (male pollinator), Winter Red, Southern Gentlemen (male pollinator)	
Ilex vomitoria	Yaupon Holly		•	•		2	3	2.5	3.5			Bordeaux	
Illicium floridanum	Florida Anise		•			4	12	3	8			Pebblebrook, Scorpio (Hybrid)	
Illicium parviflorum	Ocala Anise	•	•			8	15	8	15			Florida Sunshine, Forest Green, Bananappeal	
Itea virginica	Virginia Sweetspire	•				3	7	4	8			Several cultivars available	
Kalmia latifolia	Mountain Laurel		•	•		6	15	6	15			Southern seedlings	



Appendix

Rowen Preferred Species List: VINES

Botanical Name	Common Name	Hydric	Mesic	Sub Xeric	Lower Height Range	Upper Height Range	Lower Scored Range	Upper Scored Range	High Litter	Edible	Only in naturalizing areas	Recommended cultivars
<i>Apios americana</i>	Groundnut	•			3	8	3	8				
<i>Bignonia capreolata</i>	Crossvine	•	•	•	5	50	5	30				Tangerine Beauty
<i>Campsis radicans</i>	Trumpet Vine		•	•	10	40	10	35				Several cultivars available
<i>Clematis virginiana</i>	Virginsbower Clematis	•	•		10	20	5	10				
<i>Decumaria barbara</i>	Climbing Hydrangea	•			5	40	5	40				
<i>Gelsemium sempervirens</i>	Carolina Yellow Jessamine		•	•	2	25	4	25				
<i>Lonicera sempervirens</i>	Coral Honeysuckle	•			5	15	5	15				Magniflora
<i>Parthenocissus quinquefolia</i>	Virginia Creeper		•	•	6	30	10	30				
<i>Passiflora incarnata</i>	Wild Passion Flower		•	•	3	15	5	15		◆		
<i>Schisandra glabra</i>	Bay Starvine		•		3	15	5	15				
<i>Smilax laurifolia</i>	Laurel leaf Smilax				10	25	10	25				
<i>Smilax smallii</i>	Sweet-scented Smilax		•	•	5	25	5	25				
<i>Vitis aestivalis</i>	Summer Grape		•		5	30	5	40		◆		
<i>Vitis labrusca</i>	Fox Grape	•			5	30	10	40		◆		Sunbelt
<i>Vitis rotundifolia</i>	Muscadine Grape		•		5	40	10	40		◆		Several cultivars available
<i>Vitis vulpina</i>	Frost Grape	•			5	25	5	30		◆		
<i>Wisteria frutescens</i>	American Wisteria	•			0	0	0	0				Amethyst Falls

Rowen Preferred Species List: PERENNIALS / GROUNDCOVERS

Botanical Name	Common Name	Hydric	Mesic	Sub Xeric	Lower Height Range	Upper Height Range	Lower Scored Range	Upper Scored Range	High Litter	Edible	Only in naturalizing areas	Recommended cultivars
<i>Actea alba</i>	Doll's Eye		•		1.5	3	1	2				
<i>Adiantum pedatum</i>	Maidenhair Fern	•	•		1	1.5	1.25	2				
<i>Amsonia ciliata</i>	Threadleaf Bluestar			•	1.5	2.5	1.5	3				
<i>Amsonia ludoviciana</i>	Louisiana Bluestar			•	2	3.5	1.5	2.5				
<i>Amsonia hubrechtii</i>	Arkansas Bluestar											
<i>Amsonia tabernaemontana</i>	Blue Star		•		1	2.5	1	2				
<i>Amianthum muscaetoxicum</i>	Fly-Poison		•		0.75	1	1	1.25				
<i>Anemone thalictroides</i>	Rue Anemone	•	•		0.5	0.75	0.5	0.75				
<i>Antennaria plantaginifolia</i>	Native Pussytoes		•	•	0.16	0.75	1	2				
<i>Apocynum androsaemifolium</i>	Spreading Dogbane		•		1.5	2.5	1.5	2.5				
<i>Apocynum cannabinum</i>	Indianhemp		•		2	3	1.5	2.5				
<i>Aquilegia canadensis</i>	Eastern Columbine		•		1.5	2.5	1	1.5				
<i>Arisaema draconitum</i>	Green Dragon	•			1.5	2.5	1	1.5				
<i>Arisaema triphyllum</i>	Jack-in-the-Pulpit	•			1	2	0.75	1				
<i>Asarum arifolium</i>	Arrowleaf Ginger		•		0.5	0.75	0.75	1.5				
<i>Asarum canadense</i>	Wild Ginger		•		0.5	1	1	2				
<i>Asarum shuttleworthii</i>	Shuttleworth Ginger	•			0.25	0.5	0.5	1.5				
<i>Asclepias incarnata</i>	Swamp Milkweed	•			3	5	2	5				
<i>Asclepias syriaca</i>	Giant Milkweed		•	•	2.5	5	1	3				
<i>Asclepias tuberosa</i>	Butterfly Weed		•	•	1.25	2.5	1.5	3				
<i>Asclepias variegata</i>	White Milkweed		•	•	1	1.5	1	1.5				
<i>Aster cordifolius</i>	Heart-leaf Aster	•	•		3	6	1	2				
<i>Aster divaricatus</i>	White Wood Aster	•	•		1	2	1.25	2.5				
<i>Aster dumosus</i>	Rice Button Aster		•		2.5	4	2.5	4				
<i>Aster georgianus</i>	Georgia Aster		•	•	1.5	3	1.5	3				
<i>Aster oblongifolia</i>	Fragrant Aster		•	•								Raydon's Favorite, October Skies
<i>Aster pilosus</i>	Hairy Oldfield Aster		•	•	1.5	3	2	4				
<i>Aster puniceus</i>	Swamp Aster	•			3	5	1.5	3				
<i>Aster lateriflorus</i>	Calico Aster		•	•	1.5	3	2	4				
<i>Aster puniceus</i>	Swamp Aster	•			3	5	1.5	3				
<i>Athyrium filix-femina</i>	Lady Fern	•			1.5	3	1.5	3				
<i>Baptisia alba</i>	White Wild Indigo		•		1.5	2.5	1.5	2				Wayne's World
<i>Baptisia albescens</i>	Spiked Wild Indigo		•		2	4	1.5	2.5				
<i>Baptisia australis</i>	Blue Wild Indigo		•	•								Several cultivars available
<i>Baptisia bracteata</i>	Longbract Wild Indigo		•	•	1	2	1.5	2.5				
<i>Baptisia sphaerocarpa</i>	Yellow Wild Indigo		•	•								Screamn' Yellow, Lemon Meringue
<i>Boltonia asteroides</i>	False Aster	•	•		3	4	2.5	3.5				
<i>Cardamine diphylla</i>	Crinkleroot Toothwort		•		0.25	0.5	0.5	1				
<i>Chamaelirium luteum</i>	Fairy Wand		•		1.5	3	1	1.5				
<i>Chelone glabra</i>	White Turtle-head	•			1.5	3	2	3				
<i>Chrysogonum virginianum</i>	Green and Gold		•		0.08	0.25	0.25	0.75				Eco-spider
<i>Cimicifuga racemosa</i>	Black Cohosh		•		2.5	6	2	3				
<i>Coreopsis auriculata</i>	Mouse Ears Coreopsis		•		1	1.5	1	1.5				Nana
<i>Coreopsis delphinifolia</i>	Larkspur Tickseed		•	•	1.5	2.5	1.5	2.5				
<i>Coreopsis grandiflora</i>	Granite Tickseed		•	•	1	2	0.75	1.25				
<i>Coreopsis lanceolata</i>	Lanceleaf Coreopsis		•	•	1	2	1	2				
<i>Coreopsis major</i>	Whorled Coreopsis		•	•	1	2	0.75	1.25				
<i>Coreopsis pubescens</i>	Mountain Coreopsis		•		0	0	0	0				
<i>Delphinium carolinianum</i>	Carolina Larkspur		•		1	2	0.75	1.5				
<i>Desmodium rotundifolium</i>	Roundleaf Tick-trefoil		•	•	0.16	0.5	1.5	3				
<i>Dodecatheon meadia</i>	Shooting Star		•		0.75	1.25	0.75	1				
<i>Dryopteris marginalis</i>	Marginal Wood Fern		•		1	1.5	1.25	2				
<i>Echinacea pallida</i>	Pale Coneflower		•	•	2	3.5	1.5	3				
<i>Erythronium americanum</i>	Trout Lily		•		0.25	0.5	0.25	0.5				
<i>Eupatorium capillifolium</i>	Dogfennel		•	•	3	6	2	3				
<i>Euphorbia corollata</i>	Flowering Spurge		•	•	1	2	1	2				
<i>Eupatorium fistulosum</i>	Joe Pye Weed	•			4	6	3	4				Little Joe, Baby Joe
<i>Eupatorium hyssopifolium</i>	Hyssop-leaf Thoroughwort	•			1.5	3	1	2				
<i>Eupatorium maculatum</i>	Spotted Joe Pye Weed											Gateway, Joe White



Appendix

Rowen Preferred Species List: PERENNIALS / GROWDCOVERS												
Botanical Name	Common Name	Hydric	Mesic	Sub Xeric	Lower Height Range	Upper Height Range	Lower Scored Range	Upper Scored Range	High Litter	Edible	Only in naturalizing areas	Recommended cultivars
Eupatorium perfoliatum	Common Boneset	•			3.5	6	2	3				
Eupatorium rugosum	White Snakeroot	•	•		1	3	1	2				
Eupatorium serotinum	Late-flowering Snakeroot	•	•		1.5	2.5	1.5	2				
Gaura lindheimeri	Gaura	•	•		1.5	2	1	2				Several cultivars available
Gentiana saponaria	Soapwort Gentian	•			1	1.5	1	1.5				
Geranium maculatum	Wild Geranium		•		1	1.5	1	1.5				
Gillenia trifoliata	Indian Physic	•	•		2	4	2	4				
Helenium autumnale	Sneezeweed	•			2	3	1.5	2				
Helianthus angustifolius	Swamp Sunflower	•			5	6	2	4				
Helianthus atrorubens	Dark Eye Sunflower		•		2	4	1.5	2				
Helianthus divaricatus	Woodland Sunflower		•		3	4	1.5	2.5				
Helianthus hirsutus	Hairy Sunflower		•	•	2	5	1	5				
Helianthus strumosus	Paleleaf Woodland Sunflower		•	•	3.5	5	2.5	3.5				
Helianthus tuberosus	Jerusalem Artichoke	•			5	10	4	8				
Heliopsis helianthoides	False Sunflower		•		1.5	4	1.5	3				
Hepatica americana	Round-lobed Hepatica		•		0.25	0.5	0.25	0.5				
Heuchera americana	American Alumroot		•		0.75	1	0.75	1				
Heuchera parviflora	Roundleaf Alumroot		•		0.25	0.5	0.5	1				Green Spice
Heuchera villosa	Hairy Alumroot		•		0.75	1.5	0.75	1.5				Autumn Bride, Brownies, Caramel, Mocha
Hibiscus laevis	Halberd-leaved Rose Mallow	•			2.5	5	3	6				
Hibiscus moscheutos	Swamp Hibiscus	•			4	8	3	6				Several cultivars available
Hydrastis canadensis	Golden Seal		•		0.75	1.5	0.5	1				
Hymenocallis occidentalis	Woodland Spider Lily		•		1.5	2	1.5	2				
Iris cristata	Dwarf Crested Iris		•		0.5	0.75	0.25	1				
Iris verna	Vernal Iris		•		0.25	0.5	0.5	1				
Iris virginica	Virginia Iris	•			1.5	2.5	1.5	2.5				
Lilium michauxii	Michaux's Lily	•			2	4	1	1.5				
Liatris microcephala	Littlehead Blazing Star		•	•	1.5	2	1.5	2				
Liatris spicata	Marsh Blazing Star	•			2.5	5	1	1.5				
Lobelia cardinalis	Cardinal Flower	•			2	4	1	1.25				
Lobelia puberula	Pubescent Lobelia	•			2.5	3	1	2				
Lysimachia ciliata	Fringed Loosestrife		•		2.5	3	1	2				
Lysimachia ciliata	Fringed Loosestrife	•			2.5	3	1	2				
Lysimachia quadrifolia	Whorled Loosestrife		•		0	0	0	0				
Lygodium palmatum	American Climbing Fern	•			1	9	1	9				
Manfreda virginica	Eastern Agave		•	•	0.5	4	0.75	1				
Mitchella repens	Partridgeberry	•			0.08	0.25	1	2				
Monarda fistulosa	Wild Bergamot		•	•	1.5	2.5	1.5	2.5				
Monarda punctata	Dotted Horsemint		•	•	2	3	1.5	2.5				
Oenothera biennis	Biennial Primrose	•	•		3	4	1.25	1.5				
Oenothera fruticosa	Common Sundrops		•	•	1.25	2	1.5	2				
Onoclea sensibilis	Sensitive Fern	•			1	2	1.5	3				
Osmunda cinnamomea	Cinnamon Fern	•			2	4	2.5	5				
Osmunda claytonia	Interrupted Fern	•			2	4	2	3				
Osmunda regalis	Royal Fern	•			2	4	2	3				
Pachysandra procumbens	Alleghany Spurge		•		0.5	0.75	0.75	1.5				
Panax quinquefolius	Ginseng		•		0.75	1.5	0.75	1.25				
Peltandra virginica	Arrow Arum	•			1	1.5	1.5	2				
Penstemon laevis	Smooth Bearded Tongue		•		2.5	4	2.5	4				
Phlox divaricata	Woodland Phlox		•		1	1.25	0.75	1				Several cultivars available



Appendix

Rowen Preferred Species List: PERENNIALS / GROWDCOVERS													
Botanical Name	Common Name	Hydric	Mesic	Sub Xeric	Lower Height Range	Upper Height Range	Lower Scored Range	Upper Scored Range	High Litter	Edible	Only in naturalizing areas	Recommended cultivars	
Phlox glaberrima	Smooth Phlox	•	•		2	3	1	3				Triflora, Morris Bert	
Phlox pilosa	Fall Phlox		•		0.75	1.5	0.75	1.5					
Phlox stolonifera	Creeping Phlox		•		0.5	1	1	2					
Phlox subulata	Moss Phlox		•	•	0.25	0.5	1	3				Several cultivars available	
Physostegia virginiana	Obediant Plant	•	•		3	4	1.5	3					
Pityopsis graminifolia	Narrowleaf Silkgrass		•	•	0.75	2	1.5	2.5					
Podophyllum peltatum	Mayapple		•		1	1.25	1	1.5					
Polystichum acrostichoides	Christmas Fern	•	•		1.25	1.75	1.5	2					
Polygonatum biflorum	Common Solomon's Seal		•		1	3	1	3					
Polymnia uvedalia	Bearsfoot	•	•		3	6	2.5	5			•		
Pontederia cordata	Pickereel Weed	•	•		2	3	1	3					
Pteridium aquilinum v. pseudocaudatum	Southern Bracken Fern		•	•	1.5	2.5	1	5					
Pycnanthemum incanum	White Horse-Mint		•		2.5	4	2	3			•		
Pycnanthemum muticum	Mountain-mint	•	•		2.5	3.5	2	4			•		
Pycnanthemum tenuifolium	Narrow-leaved Mountain-mint	•	•		2	3.5	1.5	3					
Rudbeckia fulgida	Orange Coneflower		•		1.5	2.5	1	2.5				Goldsturm	
Rudbeckia laciniata	Cutleaf Coneflower	•	•		2.5	5	2	3					
Ruellia carolinensis	Carolina Petunia		•	•	0.5	1.25	0.5	2					
Rudbeckia triloba	Three-lobed Coneflower		•		2.5	4	2	2.5					
Saturegia georgiana	Georgia Savory		•	•	1	2	1.5	2.5					
Saururus cernuus	Lizard's Tail	•	•		2	3	1.5	2.5					
Sagittaria latifolia	Arrowhead Duck Potato	•	•		1.25	2	1.5	2.5					
Salvia lyrata	Lyre-leaf Salvia		•	•	0.25	0.5	0.5	1					
Sanguinaria canadensis	Bloodroot	•	•		0.25	0.5	0.25	0.75					
Senecio ananymus	Small's Ragwort		•	•	1	1.75	1	1.5					
Senecio tomentosus	Woolly Ragwort	•	•		0.75	1	1	1.5					
Silene virginica	Fire Pink		•		0.75	1.5	0.75	1					
Silphium compositum	Kidney-leaf Rosinweed		•	•	1.5	6	1.5	2					
Solidago altissima	Tall Goldenrod	•	•		3	6	2	4					
Solidago canadensis	Canadian Goldenrod	•	•		3	7	3	7					
Solidago erecta	Slender Goldenrod	•	•	•	2	4	1.5	3.5					
Solidago nemoralis	Gray Goldenrod	•	•		2.5	3.5	1.5	2					
Solidago odora	Sweet Goldenrod	•	•	•	2.5	4	2	4					
Solidago rugosa	Rough Goldenrod	•	•		2.5	4	2.5	4					
Spigelia marilandica	Indian Pink	•	•		1.5	2	1.75	3					
Sparganium americanum	Eastern Bur-reed	•	•		2	3	2	3					
Stellaria pubera	Giant Chickweed		•	•	0.5	1	0.25	1.5					
Talinum teretifolium	Rock Pink		•	•	0.25	0.75	0.25	0.75					
Thelypteris hexagonoptera	Broad Beech Fern	•	•		1	2	1	2					
Thelypteris kunthii	Widespread Maiden Fern	•	•		2	3	2.5	5					
Thelypteris noveboracensis	New York Fern	•	•		1	2	1	2					
Tiarella cordifolia	Foamflower	•	•		0.5	1	0.5	1					
Tradescantia hirsuticaulis	Hairy Spiderwort		•		0.75	1.25	1	1.5					
Tradescantia ohioensis	Ohio Spiderwort		•		2	2.5	1.5	2.5				Several cultivars available	
Uvularia perfoliata	Perfoliate Bellwort		•		1	1.5	0.75	1.5					
Veratrum woodii	Purple-flowered False Hellebore		•		2	4	1.5	2.5					
Verbesina alternifolia	Wingstem	•	•		3.5	7	2.5	5					
Verbesina occidentalis	Yellow Crownbeard		•		3	6	2.5	5					
Vernonia gigantea	Giant Ironweed	•	•		5	10	2	3					
Vernonia noveboracensis	New York Ironweed	•	•		5	6	3	4					
Vernonia fraccidifolia	Tennessee Ironweed		•		2.5	5	1.5	3					
Veratrum woodii	Purple-flowered False Hellebore	•	•		2	4	1.5	2.5					
Woodwardia areolata	Netted Chain Fern	•	•		1.5	2	1.5	2					
Woodwardia virginica	Virginia Chain Fern	•	•		1.5	2	1.5	2					
Xanthorhiza simplicissima	Yellowroot	•	•		1.25	2.5	1.25	2					
Woodwardia virginica	Virginia Chain Fern	•	•		1.5	2	1.5	2					
Yucca filamentosa	Adam's Needle Yucca		•	•	1.5	2.5	1.5	2.5				Color Guard, Ivory Tower	
Zephyranthes atamasco	Atamasco Lily	•	•		1	1.5	1	1.5					

Rowen Preferred Species List: GRASSES													
Botanical Name	Common Name	Hydric	Mesic	Sub Xeric	Lower Height Range	Upper Height Range	Lower Scored Range	Upper Scored Range	High Litter	Edible	Only in naturalizing areas	Recommended cultivars	
Andropogon gerardii	Big Bluestem	•	•		5	8	3	4					
Andropogon glomeratus	Bushy Broomsedge	•	•		0.75	2.5	0.75	1					
Andropogon ternarius	Split Beard Bluestem		•	•	0.5	3	0.75	1					
Andropogon virginicus	Virginia Broomsedge		•	•	0.5	2	0.75	1					
Arundinaria gigantea	Giant Cane	•	•		10	25	10	20			•		
Carex amphibola	Creek Sedge	•	•		0.75	1	1	1.5					
Carex cherokeensis	Cherokee Sedge	•	•		1.25	2	2	3					
Carex flaccosperma	Blue Wood Sedge	•	•		0.75	1.5	1	1.5					
Carex leptalea	Bristly-stalked Sedge	•	•		0.75	1.25	0.75	1.5					
Carex lurida	Large Sedge	•	•		1.5	2.5	1.5	2.5			•		
Carex texensis	Texas Sedge		•		0.25	0.5	0.5	1.5					
Chasmanthium latifolium	River Oats	•	•		2	2.5	1.5	3					
Chasmanthium laxum	Slender Wood Oats		•		2	2.5	2	2.5					
Chasmanthium sessiliflorum	Longleaf Wood Oats		•		1.5	3.5	1	2					
Dichanthium clandestinum	Deer-tongue Grass	•	•		1.5	2.5	1.5	3					
Dichromena latifolia	White-topped Sedge	•	•		1.5	2	0.5	0.75					
Elymus virginicus	Virginia Wild Rye	•	•		2.5	4	2	2.5					
Equisetum hymale	Horsetail	•	•		2.5	4	1	8			•		
Eragrostis spectabilis	Purple Love Grass		•	•	1	2	1.25	2					
Glyceria striata	Fowl Manna Grass	•	•		2	3.5	2	3.5					
Juncus effusus	Soft Rush	•	•		2	3	2	3					
Leersia oryzoides	Rice Cutgrass	•	•		2	3.5	2	3.5					
Luzula acuminata	Common Wood Rush	•	•		0.5	0.75	0.5	1					
Muhlenbergia capillaris	Pink Muhly Grass		•		2	3	2	2.5				White Cloud	
Panicum virgatum	Switch Grass	•	•		2.5	4	2.5	4				Several cultivars available	
Saccharum giganteus	Sugarcane Plumegrass	•	•		3	10	2	3					
Schizachyrium scoparium	Little Bluestem	•	•	•	1	3	1	2					
Scirpus cyperinus	Woolly Bulrush	•	•		1.5	6	1.5	1.75					
Scirpus validus	Soft-stemmed Bulrush	•	•		3	7	1.5	3					
Sorghastrum nutans	Indian Grass	•	•		2	4	2	3					
Spartina bakeri	Sand Cordgrass	•	•		2.5	4	3	4					
Tripsacum dactyloides	Eastern Gamagrass	•	•		3	6	2	4					
Tridens flavus	Purple Top	•	•		2.5	4	1.5	2					



